

CARNAHAN · PROCTOR · CROSS, INC.

CONSULTING ENGINEERS · SURVEYORS · PLANNERS

6101 WEST ATLANTIC BOULEVARD, MARGATE, FLORIDA 33063

PHONE: 954-972-3959 FAX: 954-972-4178

APRIL 2001

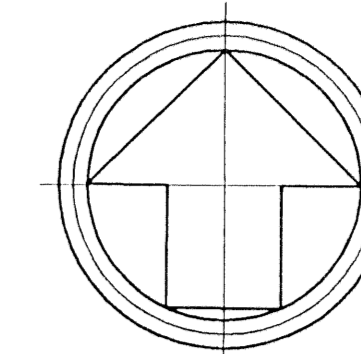
991010

JSH

ANTHONY GROVES P.U.D.

ANTHONY GROVES PHASE 1

A PORTION OF SECTION 1, TOWNSHIP 44 SOUTH, RANGE 41 EAST,
VILLAGE OF ROYAL PALM BEACH, PALM BEACH COUNTY, FLORIDA



0 20' 40' 100'
10' 30' 50'
SCALE: 1" = 40'

42

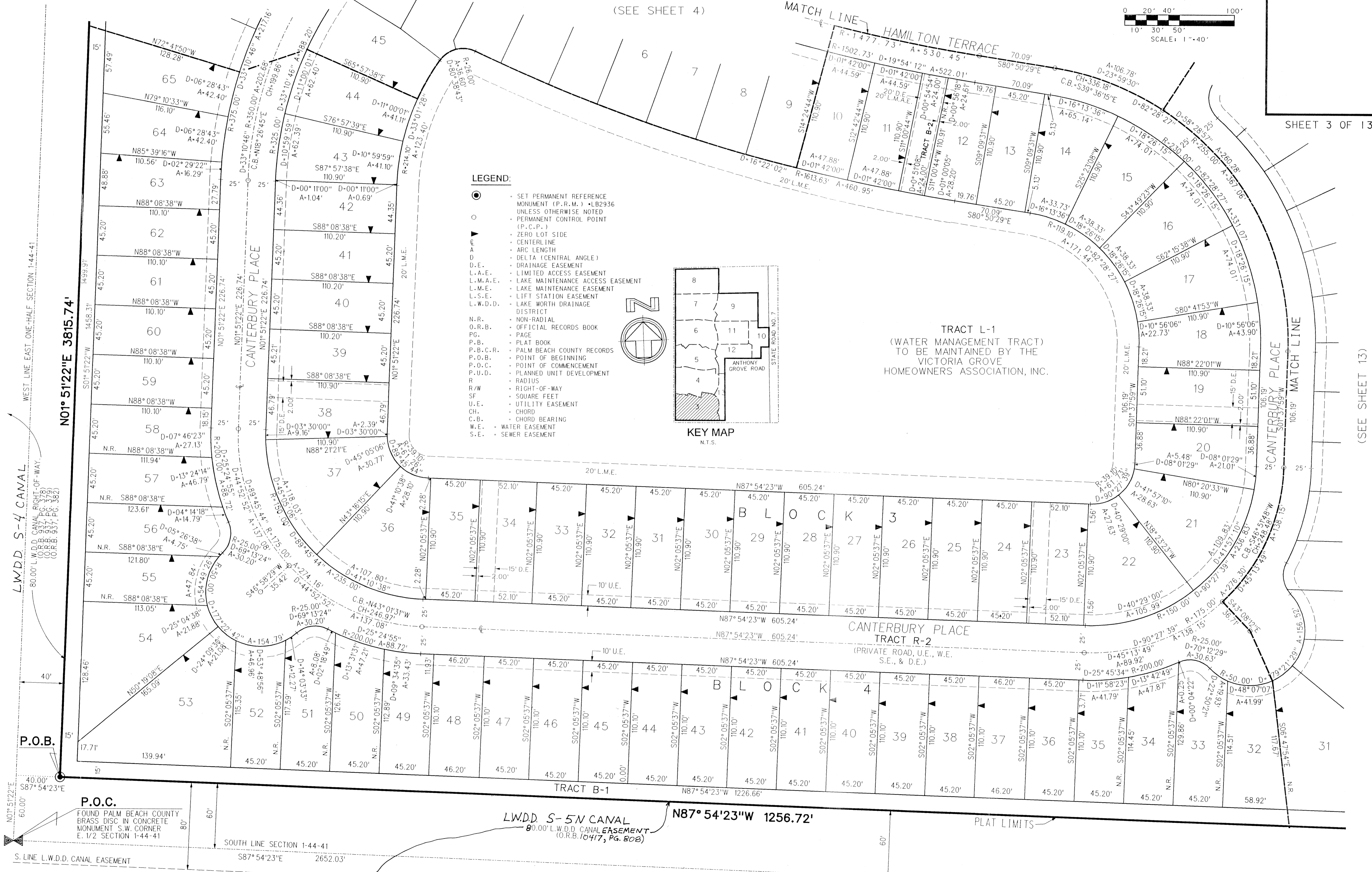
SHEET 3 OF 13

(SEE SHEET 13)

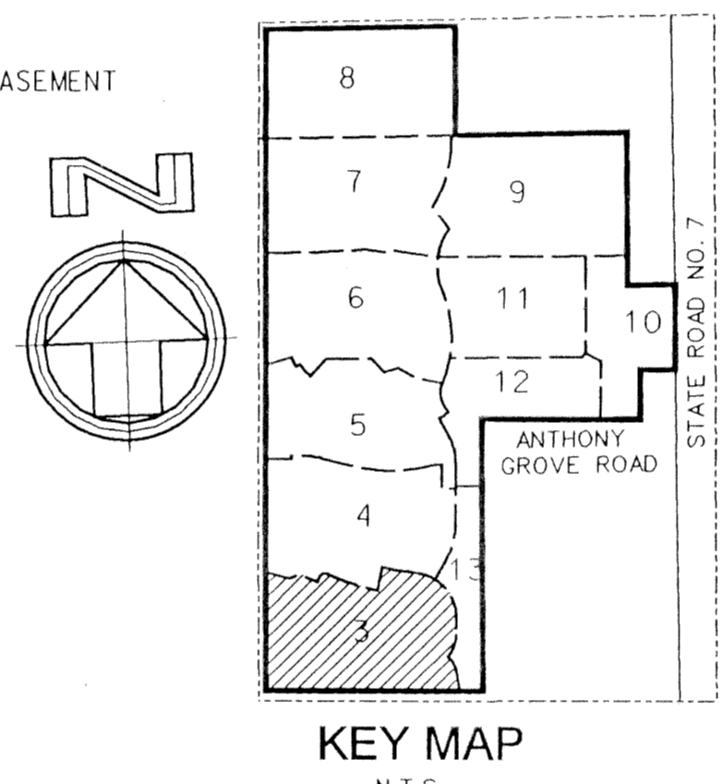
(SEE SHEET 4)

MATCH LINE

MATCH LINE



- LEGEND:**
- SET PERMANENT REFERENCE MONUMENT (P.R.M.) • LB2936 UNLESS OTHERWISE NOTED
 - PERMANENT CONTROL POINT (P.C.P.)
 - ▲ ZERO LOT SIDE
 - CENTERLINE
 - ARC LENGTH
 - Δ DELTA (CENTRAL ANGLE)
 - D.E. DRAINAGE EASEMENT
 - L.A.E. LIMITED ACCESS EASEMENT
 - L.M.A.E. LAKE MAINTENANCE ACCESS EASEMENT
 - L.M.E. LAKE MAINTENANCE EASEMENT
 - L.S.E. LIFT STATION EASEMENT
 - L.W.D.D. LAKE WORTH DRAINAGE DISTRICT
 - N.R. NON-RADIAL
 - O.R.B. OFFICIAL RECORDS BOOK
 - PG. PAGE
 - P.B. PLAT BOOK
 - P.B.C.R. PALM BEACH COUNTY RECORDS
 - P.O.B. POINT OF BEGINNING
 - P.O.C. POINT OF COMMENCEMENT
 - P.U.D. PLANNED UNIT DEVELOPMENT
 - R. RADIUS
 - R/W RIGHT-OF-WAY
 - SF SQUARE FEET
 - U.E. UTILITY EASEMENT
 - CH. CHORD
 - C.B. CHORD BEARING
 - W.E. WATER EASEMENT
 - S.E. SEWER EASEMENT



TRACT L-1
(WATER MANAGEMENT TRACT)
TO BE MAINTAINED BY THE
VICTORIA GROVE
HOMEOWNERS ASSOCIATION, INC.

CANTERBURY PLACE
TRACT R-2
(PRIVATE ROAD, U.E., W.E.,
S.E., & D.E.)

TRACT B-1
LWDD S-5N CANAL
80.00' L.W.D.D. CANAL EASEMENT
(O.R.B. 10417, PG. 80B)

LWDD S-4 CANAL
80.00' L.W.D.D. CANAL RIGHT-OF-WAY
(O.R.B. 937, PG. 37B)
(O.R.B. 937, PG. 37B)
(O.R.B. 937, PG. 362)

NO1° 51'22" E 3815.74'

N87° 54'23" W 1256.72'

P.O.B.

P.O.C.

FOUND PALM BEACH COUNTY
BRASS DISC IN CONCRETE
MONUMENT S.W. CORNER
E. 1/2 SECTION 1-44-41

FILE: r1991010\codaw\11opp3.dgn
DATE: 17-Sep-01 13:51